

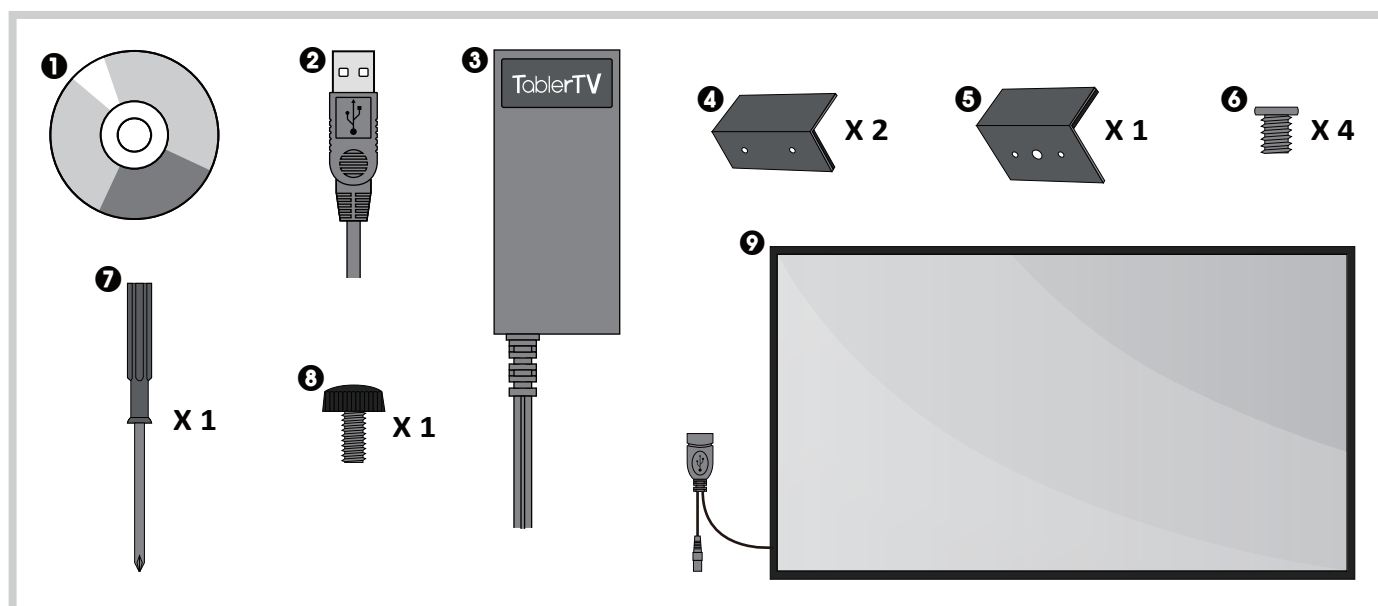
TablerTV Frame Assembly Guide

1. Product Introduction

TablerTV is an all-in-one hardware which could quickly turn your TV/Display into a multi-touch device. For each TablerTV, you can choose among 3 versions. Namely, 2 touch points(entry- level), 6 touch points (standard) and 32 touch points(professional level). TablerTV is super easy to setup, you can assemble it quickly according to the **TablerTV Assembly Steps**.

2. TablerTV Frame Packing List

☺ Please check your TablerTV package to find out all the items in the packing list. TablerTV reserves all the right to alter or modify the shape, color or any other appearance of the items in the package at any time without notice.



- | | |
|------------------------------------|---|
| ① Driver Disk | ⑥ Small Screw x 4 |
| ② USB Cable | ⑦ Screw-Driver |
| ③ Power Adaptor | ⑧ Hand Screw x 1 |
| ④ Top Anti-Vandal Secure Lock*2 | ⑨ TablerTV Frame with Embedded Tempered Glass |
| ⑤ Bottom Anti-Vandal Secure Lock*1 | |

Note: Due to the different appearance of TV/Display models, the shape of the above items may vary.

Note: We also recommend the following accessories when you purchase TablerTV Frame

iStick: Mini-sized computer with high performance and 3D acceleration, best companion with TablerTV for digital signage.

TablerTV Stand: Provide stable and firm support, avoid shaking when fingers touching on the screen.

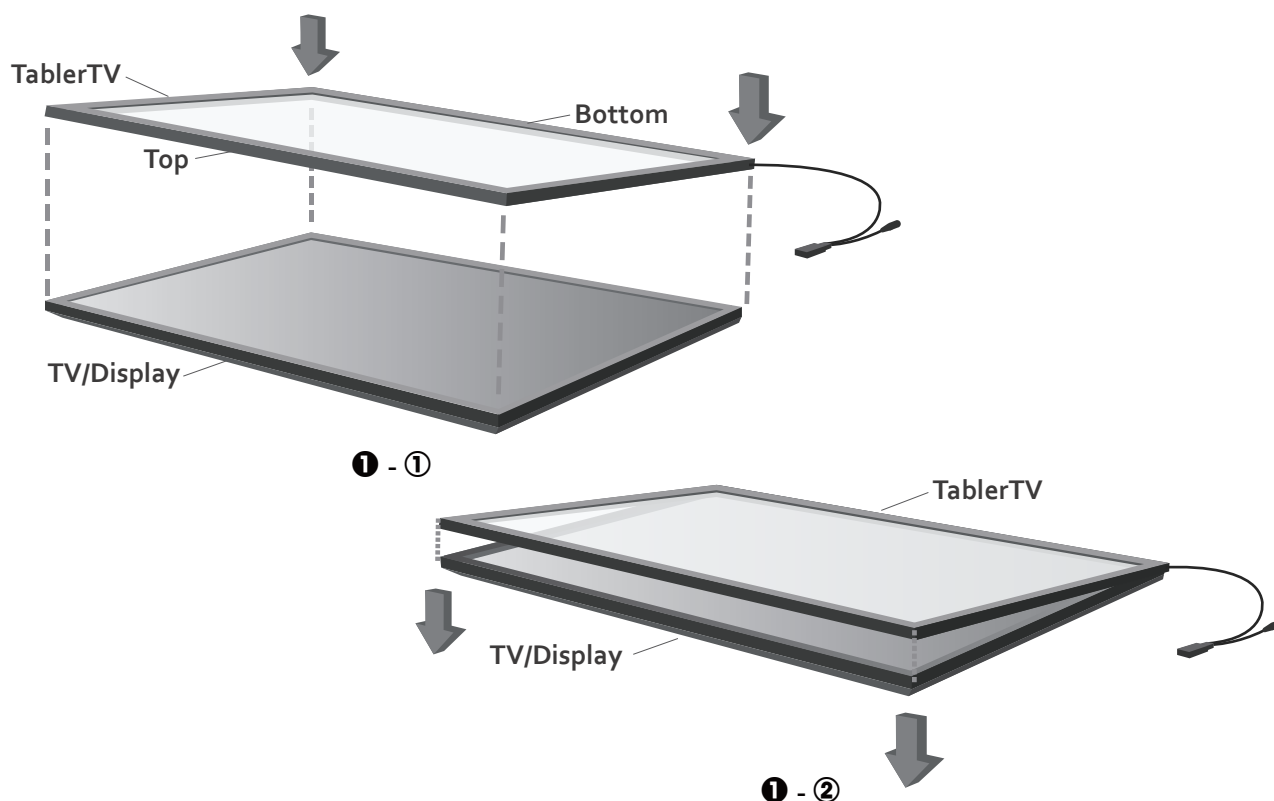


3. TablerTV Assembly Steps (without TablerTV stand)

Note: For TablerTV Assembly with TablerTV stand, please refer to TablerTV Stand Assembly Guide.

3-1. Mount TableTV Frame to Your TV/Display

Set your TV/Display face up, and snap TablerTV frame onto it like a cell phone cover. You just need to put two top corners of TV/Display into the frame, and then lie down the frame naturally to make it cover the two bottom corners of TV/Display.



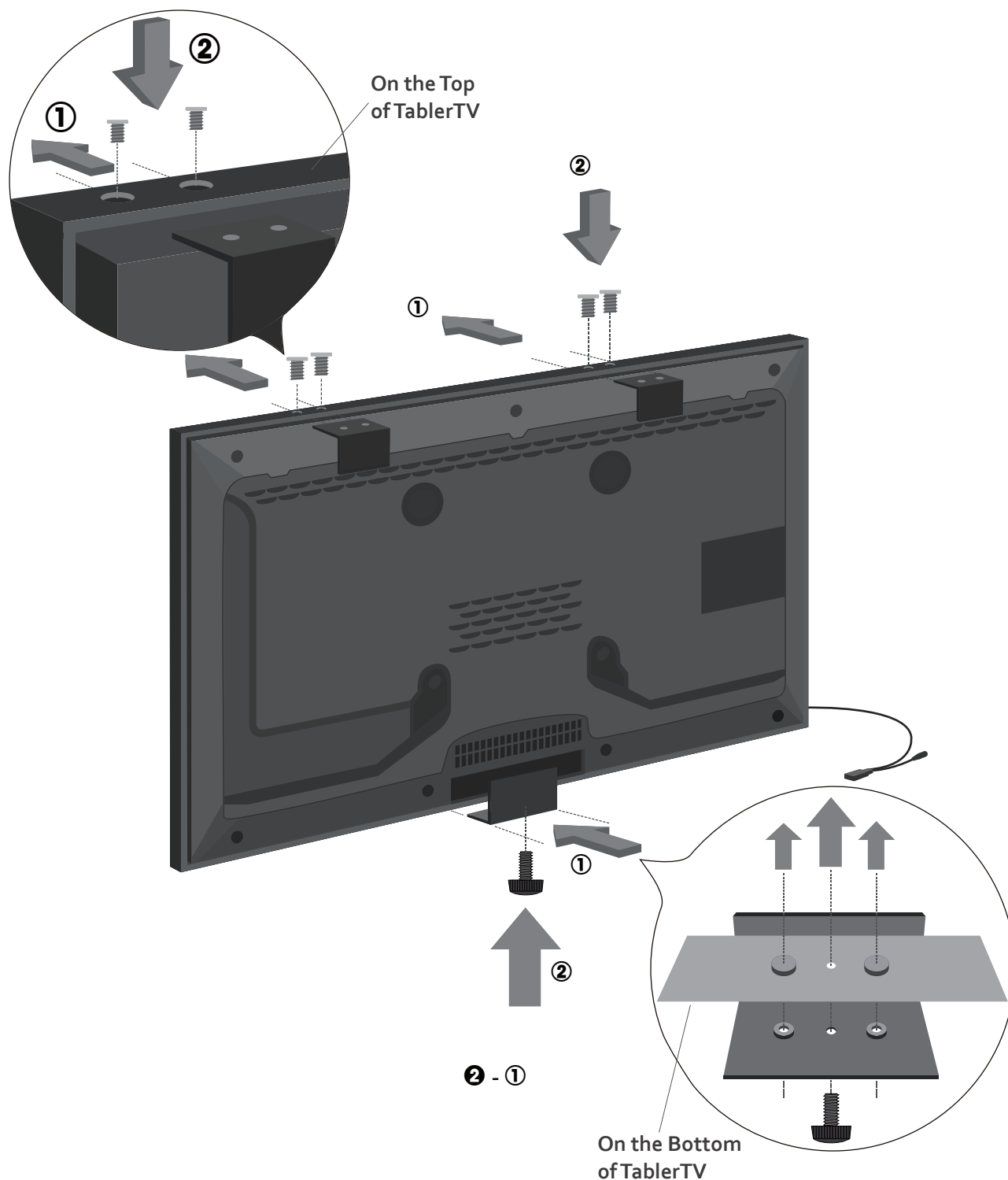
3-2. Assemble the Anti-Vandal Secure Lock

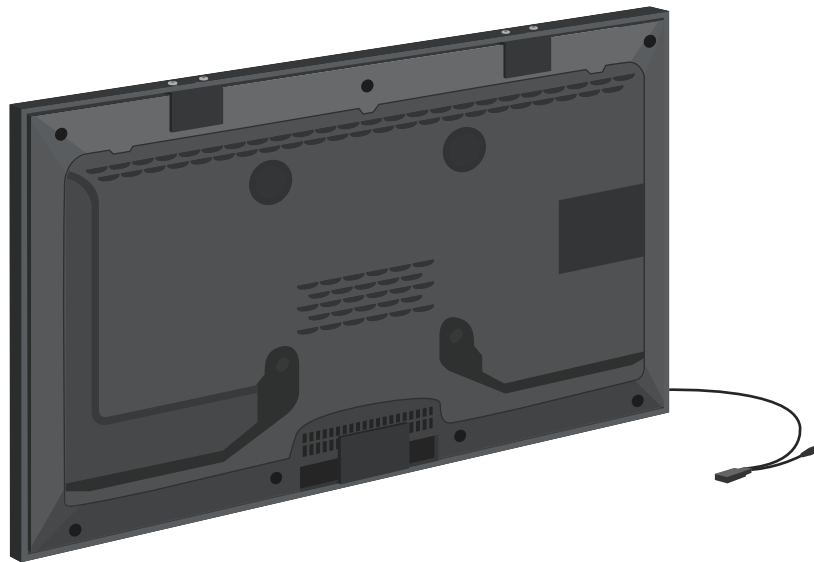
- Assemble the Top Anti-Vandal Secure Lock

Insert the upper anti-vandal secure lock between TablerTV Frame and TV/Display, fix each upper secure lock with two small screws.

- Assemble the Bottom Anti-Vandal Secure Lock

The position for the bottom anti-vandal secure lock is about in the middle of the TablerTV frame, fix the bottom anti-vandal secure lock with a hand screw.





② - ②

3-3. Fix TablerTV with TV/display on the wall or use our specially designed TablerTV stand (Recommended).

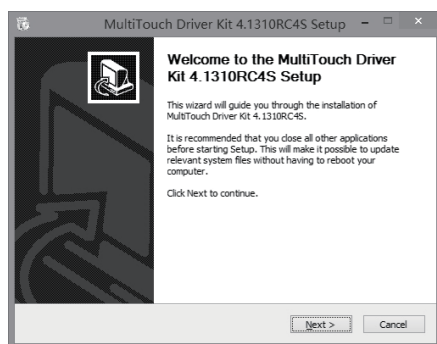
3-4. Plug the USB cable and power cable into the sockets on the lower left corner of the TablerTV frame.

3-5. Install the multi-touch driver on the driver disk.

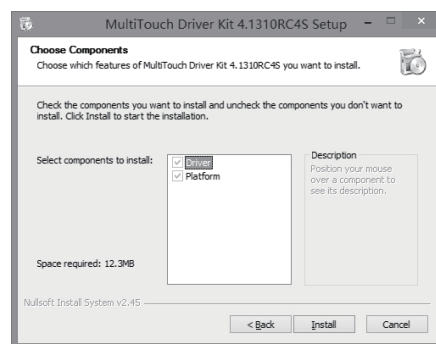
Note: There is no need for driver installation on iStick

Installing TablerTV Multi-Touch Driver:

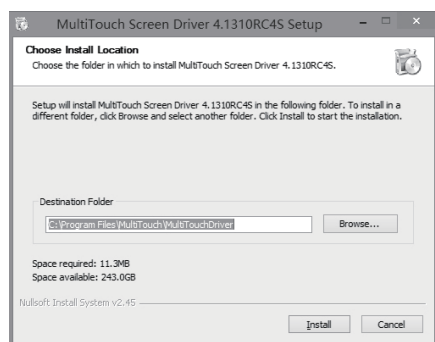
Driver: Installing the driver will allow the computer and display to recognize the TablerTV. Follow the simple instructions below to complete your installation.



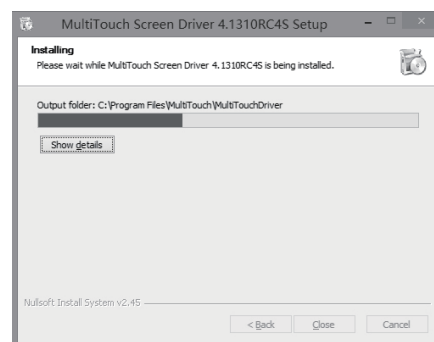
• Click “next” on the installation interface.



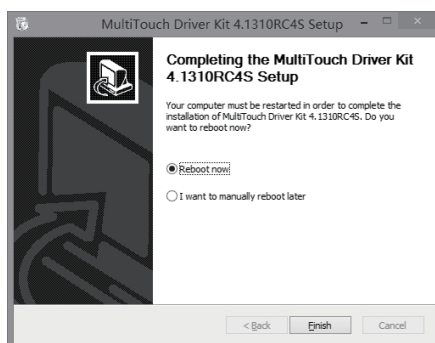
• It's very important to check both the Driver and Platform are installed.



- Designate the installation path.



- In a few minutes, installation of the Driver and Platform should be complete. You'll need to reboot your computer after installation.



- Select “reboot now”, and click “finish” to complete the installation.

4. Product Warranty

TablerTV warrants its hardware against defects in materials and workmanship for a period of one (1) year from the date it is shipped to the customer. In the event a reseller purchases a product from TablerTV and integrates it with a system, the warranty period begins on the original ship date from TablerTV. Warranty is void when failure of the product results from an accident, abuse, misapplication, modification, unauthorized maintenance or repair by the customer. Hazards such as lightning and flooding, as well as neglect of voltage specifications are not covered under warranty.

5. Software/Hardware Requirements

Minimum

■ Processor	Dual Core 2.5G or better
■ Memory	2G or more
■ Graphic Card	N/A
■ Operating System	Windows 8/7/Vista/XP, Mac OS X, Ubuntu/Fedora
■ Power Supply	AC Adapter (5V, 4A)

Recommended

■ Processor	Quad Core 2.5G or better
■ Memory	4G or more
■ Graphic Card	DX 9.0 standalone VRAM: 512MB or better
■ Operating System	Windows 8/7
■ Power Supply	AC Adapter (5V, 4A)

6. Environmental Requirement

- Operating temperature: 0°C to 55°C;
- Storage temperature: -25°C to 85°C
- Operating humidity: 10% to 90% RH, non-condensing
- Storage humidity: 10% to 90% RH, non-condensing